

**Digital art centre
Amsterdam**



**1,350 m²
50 - 1,000 guests
State of the art immersive equipment**



FABRIQUE DES LUMIÈRES

AMSTERDAM

**LOCATED NEAR THE CENTRE
OF AMSTERDAM**

Zuiveringshal, Westergasterrein

50 - 1,000 GUESTS

in our exhibition areas

**MULTIMEDIA EQUIPMENT THAT IS
UNIQUE IN THE WORLD**

1,350 m² exhibition space

3,800 m² projection area (walls & floor)
with around 100 video projectors and a
spatialised sound system

**LARGEST DIGITAL ART CENTRE
IN THE NETHERLANDS**

with cutting-edge technology to
create immersive exhibitions



INTRODUCTION

Created by Culturespaces, Fabrique des Lumières is a digital art centre located in Amsterdam's Zuiveringshal at Westergas. Using cutting-edge technology with light projections and music, Fabrique des Lumières features immersive exhibitions of classical, modern, and contemporary artists. Our visitors can enjoy a high-quality visual and audio art experience that is perfectly adapted to the 19th century historic building we are located in. The immersive exhibitions are projected onto all surfaces of the walls and floors of Fabrique des Lumières making it a full sensory encounter.

With our innovative and highly advanced technical equipment, Fabrique des Lumières provides the perfect opportunity for tailor made events with your presentation, projection or product(s) in an impressive setting and adapted to your taste and desired atmosphere.

BACKGROUND OF THE ZUIVERINGSHAL

The Westergas area lies on the western side of Amsterdam, a stone's throw away from the city centre, central station and the A10 highway. It is a unique location with its own raw character that can be reached easily through all means of transport.

Way back in 1883, the British Imperial Continental Gas Association built the Westergasfabriek in Amsterdam - a coal-fired gasworks to produce manufactured gas to light the city's streets. The Westergasfabriek was an extensive 4-hectare complex consisting of several gasometers, coal storage depots, waste-water treatment plants and a water tower, making it the largest coal-fired gasworks in the Netherlands. In the Zuiveringshal the gas was purified in large boilers with sand and chemicals.

After the closing of the factory in the late 1960s, the site was left unused and since 2003, it has been providing new light and energy with a picturesque park (Westerpark) that has been laid out. Westergas area became a centre for arts, culture and hospitality venues, where historical values and innovative ideas come together. Numerous events and festivals are organised here every year, surrounding Fabrique des Lumières with a lively atmosphere. Fabrique des Lumières can accommodate up to 1,000 people for meetings, dinners, (fashion) shows, product launches or company presentations in the two Fabrique des Lumières spaces: the Hall and the Studio. Note: the Hall can be split into two parts, so that you can have multiple program components taking place in the same building.



PRIVATE EVENTS

Fabrique des Lumières can be reserved for your event outside its public opening hours.

PRIVATE VISITS

- **Breakfast event:** Offer your guests a private visit of the current exhibitions followed by a network, corporate event or meeting space in the mornings from 7 a.m. to 9 a.m.
- Exclusively hosted in the Studio, a continental breakfast with pastries, tea, coffee and fruit juice, for up to 100 guests can be served.

COCKTAIL PARTIES AND DINNERS

- All our areas can be reserved for **cocktail parties and dinners**. The service includes the rentable spaces and the projection of any of our current immersive exhibitions (total duration: approx. 50 minutes).
- The caterer and other service providers are additional and will need to be selected from the list of approved service providers.

PROFESSIONAL EVENTS

- **Corporate events:** the layout of the areas and the on-site technical equipment (integrated video projectors and sound system) make Fabrique des Lumières the ideal location to create an evening event that combines an immersion in art history with the presentation of your customised projections.
- **Corporate presentations:** the Hall with its Overpass is an ideal space for your speech or presentation that can be arranged into an impactful setting of your choosing.
- **Product launches or shows:** the venue's nineteenth-century industrial decor is a unique setting for your event. You can use Fabrique's areas to project your images, logos, and videos as well as display your product(s) or collection(s) in an impressive surrounding.

Other options for events can be discussed with our Events Team, please get in touch via the contact details provided.

A WIDE RANGE OF CHOICES TO PERSONALISE YOUR EVENT

Our state of the art projection equipment at Fabrique des Lumières makes it possible to project your visuals according to the requirements of your event.

You can choose between:

- The original decor, with elegant lighting options that enhance the venue's architecture.
- The screening of the current immersive exhibitions: offer your guests an exceptional journey into the heart of art. Masterpieces by the most celebrated artists are brought to life before your eyes, accompanied by music.
- A catalogue of still or animated ambiances is available for you to choose from to create the desired atmosphere for your event.
- Your personalised world: project a customised video or presentation onto the walls of Fabrique des Lumières Hall or Studio.
- Our approved service providers are at your disposal to help you design an entirely personalised show: the creation of a synopsis, scenography or animation of your media (photos, videos, sound, etc.), its soundtrack and the full integration of your project into our multimedia equipment.



EVENT SPACES

All the areas of Fabrique des Lumières can be reserved for your events and the guests can wander freely to view the digital exhibitions and discover the current programme.

Hall

- Surface area 1,230 m²
- Length 67 m
- Width 18 m
- Height 17 m

Studio

- Surface area 110 m²
- Length 13 m
- Width 8 m
- Height 5.4 m

ESTIMATED CAPACITY - HALL

		
Receptions 1,000 guests	Theatre 800 guests	Dinners 500 guests



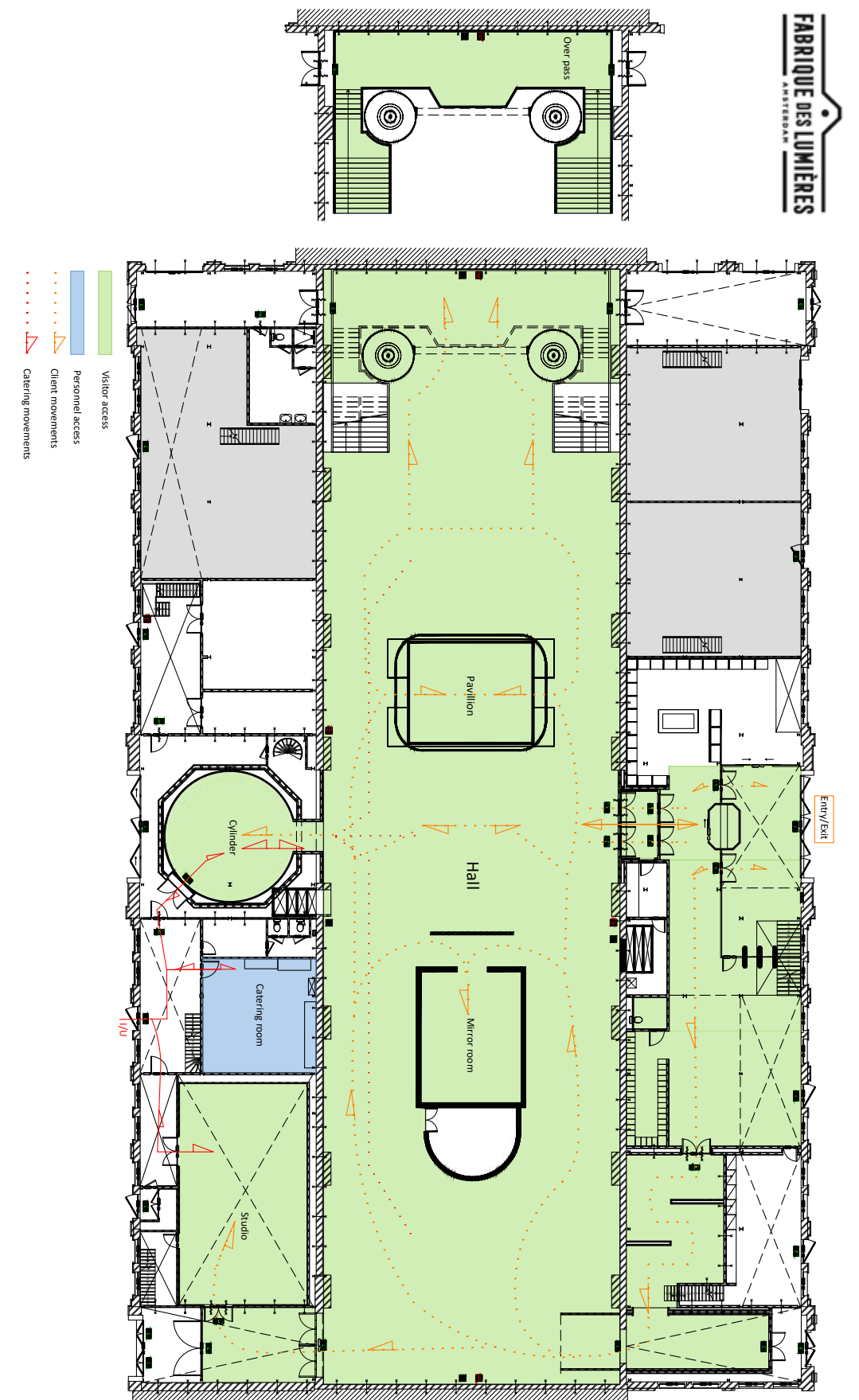
ESTIMATED CAPACITY - STUDIO

		
Receptions 100 guests	Theatre 70 guests	Dinners 50 guests





LAYOUT OF THE AREAS





PRACTICAL INFORMATION



Pazzanistraat 37, 1014 DB Amsterdam
T: +31 (0)6 1007 7527
E: locatiehuur@fabrique-lumieres.com
www.fabrique-lumieres.com
[#fabriquedeslumieres](https://www.instagram.com/fabriquedeslumieres)



PUBLIC OPENING HOURS:

9 am - 5 pm Mo - Thu
9 am - 9 pm Fri - Sat
9 am - 5 pm Sun
(Events possible outside of these opening times)

ACCESSIBILITY

Fabrique des Lumières is centrally located and easily accessible by various means of transport. Our site is located on Westergasterrein inside Westerpark, a car-free environment.

Bicycle

- Easy 10 mins cycling from central Amsterdam or Sloterdijk station.
- Many bicycle parking options available around Fabrique des Lumières.

Public Transport

- From Centraal Station: Bus 21, stop Van Hallstraat.
- Nearest Tram, Line 3, stop Van Hallstraat
- From Sloterdijk Station: Bus 22, stop Assendelft straat, walk through the park to Fabrique des Lumières.

Car

- From highway A10: Exit S103/S104 (Haarlem), direction 'centrum' on Haarlemmerweg. You will find Westerpark on the left after a few minutes.

- From Schiphol: A4 direction Amsterdam (A10). Exit S103 via Haarlemmerweg direction 'centrum'. You will find Westerpark on the left after a few minutes.

Parking

- Q Park Westerpark: Van Bleiswijkstraat 8/ 1051 DG Amsterdam – directly opposite Westergasterrein
- Parkeergarage Willemspoor: Haarlemmer Houttuinen 549/ 1013 GM Amsterdam – 10 minutes by foot
- Q-park Bos en Lommer with P+R (€ 1,20 per hour / € 12, - per day) Leeuwendalerweg 23B / 1055 JE Amsterdam – 10 minutes by bus 21





Pazzanistraat 37
1014 DB Amsterdam

www.fabrique-lumieres.com

